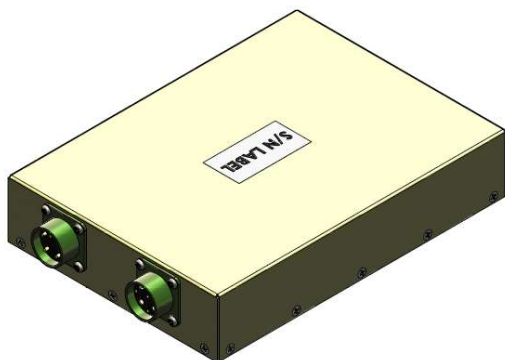




XP2252-1

600W SINGLE PHASE 60Hz AC/DC POWER SUPPLY



- Frequency Range 47 - 63Hz
- Operates -40 to +80°C Base Plate
- Ruggedized For MIL-STD-810 Requirements
- MIL-STD-704 and MIL-STD-1399 Compliant
- Meets MIL-STD-461 Requirements
- Over Current and Over Voltage Protection
- Near Unity Power Factor
- High Efficiency

DESCRIPTION:

This AC/DC power supply is designed to be compact and ruggedized for military applications. The XP2252 AC/DC Power Supply provides high output power with a high power factor over an input range of 85–264Vrms. Many features are incorporated that make it an ideal choice for use in Airborne, Shipboard, or Ground Fixed applications.

GENERAL SPECIFICATIONS	
INPUT VOLTAGE:	85-264Vrms
FREQUENCY RANGE:	47 - 63Hz
OUTPUT VOLTAGE:	28 VDC
OUTPUT POWER:	600 WATTS
PHYSICAL SIZE:	8.0" X 5.8" X 1.6"
WEIGHT:	< 4 LBS
MTBF:	>990,000 HRS (G.B. +30°C)

PHYSICAL CHARACTERISTICS	
MAXIMUM CASE SIZE	8.0" X 5.8" X 1.6"
COOLING METHOD	CONDUCTION
ENCAPSULATION	CONFORMAL COAT
SUPPLY FINISH	YELLOW CHROMATE
INPUT/OUTPUT TERMINATION	MIL-DTL-24682: INPUT; MS3740W14-5P / OUTPUT; MS374014-9S
MOUNTING	THREADED BASE PLATE



XP2252-1

600W SINGLE PHASE 60Hz AC/DC POWER SUPPLY

ELECTRICAL SPECIFICATIONS	
INPUT VOLTAGE	85-264Vrms, 50/60/400HZ PER MIL-STD-704A AND MIL-STD-1399 (60HZ)
UNDERVOLTAGE LOCKOUT	30Vrms TYPICAL
INRUSH CURRENT	20Apk (25Apk, 230V, 400Hz)
POWER FACTOR	.99
ISOLATION	IN TO OUT & IN to CASE: 1500Vdc, OUT TO CASE: 500Vdc
ISOLATION RESISTANCE	100MOHM
EMI/EMC	DESIGNED TO MEET MIL-STD-461F: CE101, CE102, CS101, CS114, CS115, CS116, RE101, RE102, RS101, RS103.
OUTPUT VOLTAGE	28VDC
OUTPUT POWER	600 WATTS
LINE/LOAD REGULATION	1% TYP. N.L. TO F.L.
PARD (RIPPLE/NOISE) DC-20MHZ	1% TYP. OF VOUT
CURRENT LIMIT	106-135% OF RATED CURRENT
SHORT CIRCUIT	INDEFINITE, AUTO RECOVERY
O.V.P.	112.5-137.5% VO, SHUTDOWN METHOD
LOAD STEP RECOVERY (50% - 75% - 50%)	1V, 1mS TYP.
OVER TEMPERATURE	SHUTDOWN: 90°C TYP., AUTO RECOVERY: 10°C HYSTERESIS
EFFICIENCY	80%

ENVIRONMENTAL SPECIFICATIONS		
ALTITUDE	MIL-STD-810G	Method 500.5, Procedure 1 & 2
HIGH TEMPERATURE	MIL-STD-810G	Method 501.5, Procedure 1 & 2
LOW TEMPERATURE	MIL-STD-810G	Method 502.5, Procedure 1 & 2
HUMIDITY	MIL-STD-810G	Method 507.5, Procedure 2
FUNGUS	MIL-STD-810G	Method 508.6, Table 508.6-I
SALT FOG	MIL-STD-810G	Method 509.5, Storage
SAND AND DUST	MIL-STD-810G	Method 510.5, Procedure 1 & 2
EXPLOSIVE ATMOSPHERE	MIL-STD-810G	Method 511.5, Procedure 1
ACCELERATION	MIL-STD-810G	Method 513.6, Procedure 2
VIBRATION	MIL-STD-810G	Method 514.6, Procedure 1
SHOCK	MIL-STD-810G	Method 516.6, Procedure 1 & 6

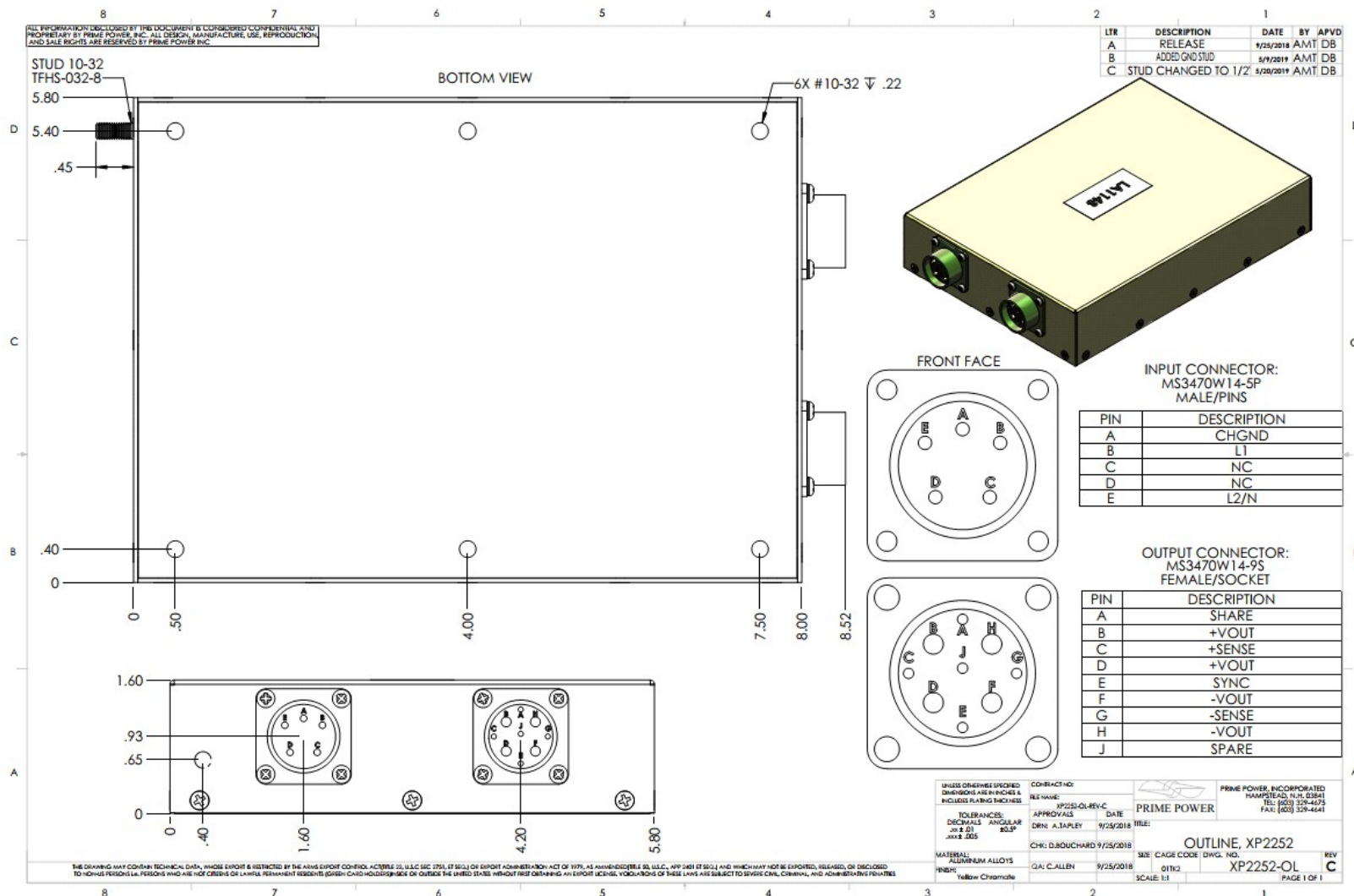
* These are typical tests performed on similar designed ruggedized product.

TEMPERATURE SPECIFICATIONS	
OPERATING TEMPERATURE (BASEPLATE)	-40°C TO +80°C
STORAGE TEMPERATURE	-55°C TO +125°C
TEMPERATURE COEFFICIENT	.01%/°C



XP2252-1

600W SINGLE PHASE 60Hz AC/DC POWER SUPPLY



WWW.PRIME-POWER.COM

SALES@PRIME-POWER.COM

PRIME POWER INC: (603) 329-4675.
1 OWENS CT.
HAMPSTEAD NH, 03841.